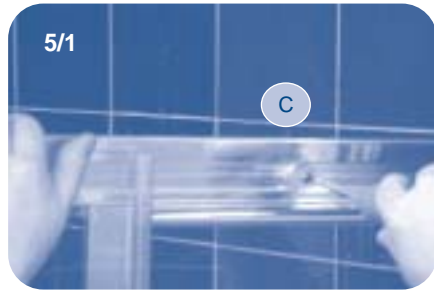


5 Fit Door Stops

- Align
- Screw by hand

- Fit the four door stops with M4 x 12mm screws onto the wheel track (C) top and bottom.



6 Align Door

- Align
- Screw by hand



Note: In the event that the doors require realignment, proceed as follows.

- 6/1 With shower door in fully open position, unscrew cover.
- 6/2 Hold screw in position with flat head screwdriver and unlock back nut with spanner. Rotate wheel by turning screw to raise or lower door. When door is in correct position tighten nut with spanner while keeping screw in position with screwdriver.

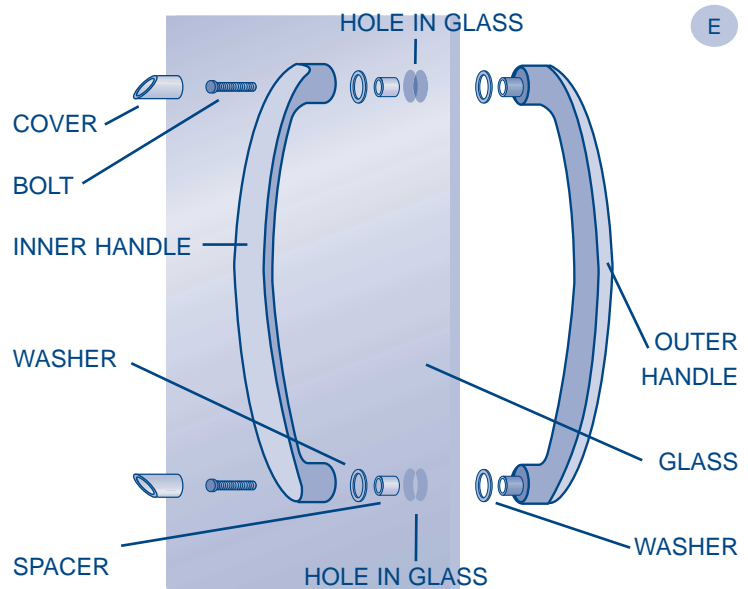
Note: One or more wheels may need adjustment.



7 Fix Handles

- Assemble • Screw

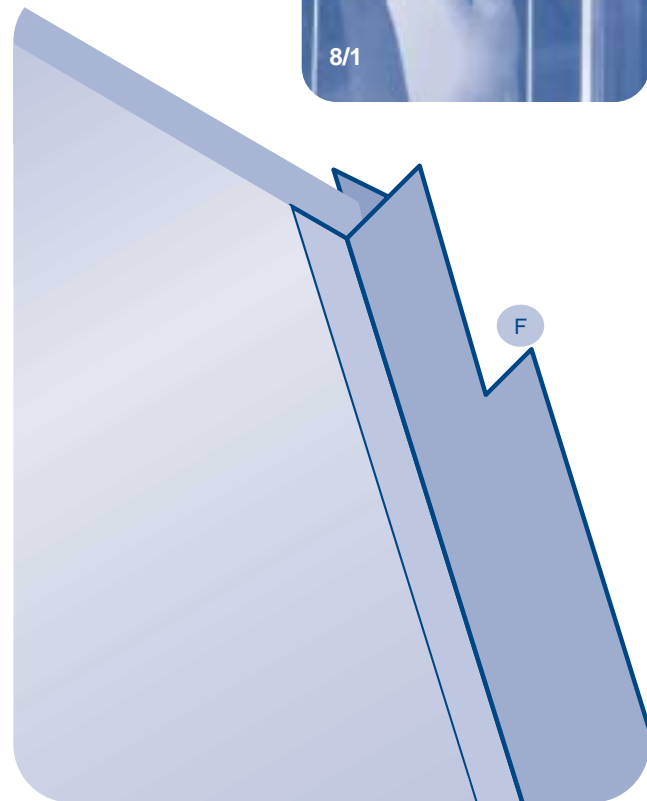
- Place bolts through inner handle. Place washers and spacers onto bolts and insert through holes in glass.
- Align outer handle onto bolts and tighten with screw driver. Place cover over the screws.



Do not forget the spacers or washers!

8 Add Gaskets

- Place one gasket (F) on door glass with the fin pointing toward the fixed panel glass.



9 Water Proofing

- Silicone Seal

- Seal the outside edge of the shower with suitable bathroom silicone all around the shower tray and the joining between the wall brackets (A) and the tiled wall. Allow to set for a minimum of 24 hours before using the shower.



CHIANTI QUADRANT

Instructions

chianti
do it with flair

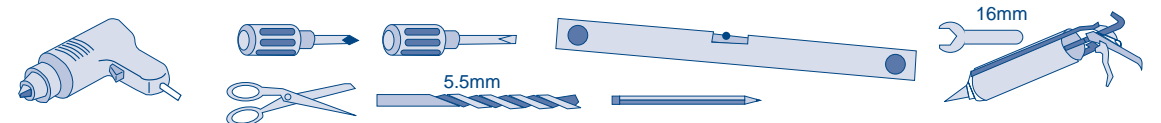


Note: Heavy Product - Requires 2 persons to assemble and fit.

BEFORE YOU INSTALL YOUR CHIANTI QUADRANT SHOWER ENCLOSURE PLEASE READ ALL INSTRUCTIONS. FAILURE TO DO SO MAY LEAD TO INVALIDATION OF YOUR WARRANTY

- Your enclosure must always be fixed onto a sturdy tiled wall to ensure a waterproof shower.
- The shower tray must be fitted level, tiled in and sealed along its entire wall length.
- The shower should be sealed using silicone sealant, vertically and horizontally, on the outside only.
- Warning: Check walls for electric cabling or water pipes before drilling.

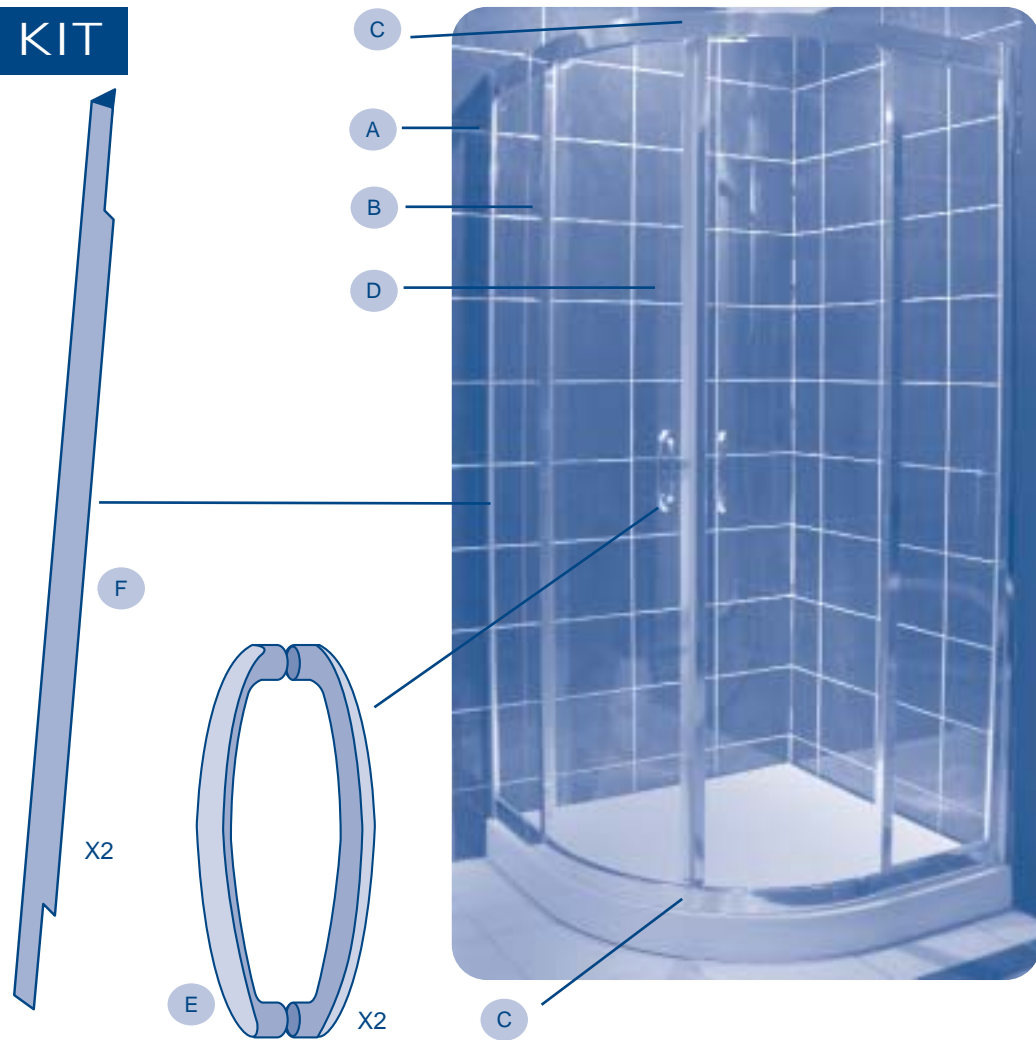
Tools required to install your new Chianti Quadrant Shower Enclosure.



INSTALLATION KIT

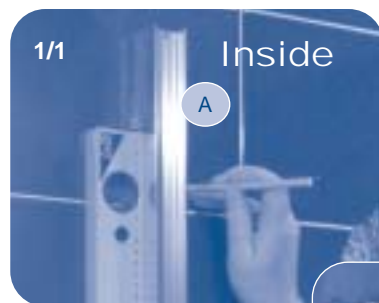
-  x8 (M4 x 45mm)
-  x6 (M4 x 40mm)
-  x4 (M4 x 20mm)
-  x10 (M4 x 12mm)
-  x16 Screw Cap
-  x 4 Door Stop
-  x 6

- A. Wall brackets
- B. Fixed panel
- C. Wheel Tracks
- D. Sliding Doors
- E. Handles
- F. Door Gasket



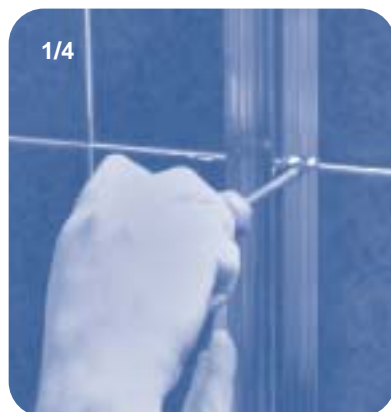
1 Fit Wall Bracket x 2

- Drill
- Plug
- Screw
- Fit wall brackets (A) 10mm in from the outside of the shower tray ensuring the profile is plumb. Mark each hole for position.



- Drill with a 5.5mm masonry drill bit.
- Insert wall plugs into drilled holes

- Insert M4 x 40mm screw into wall brackets and secure to wall.

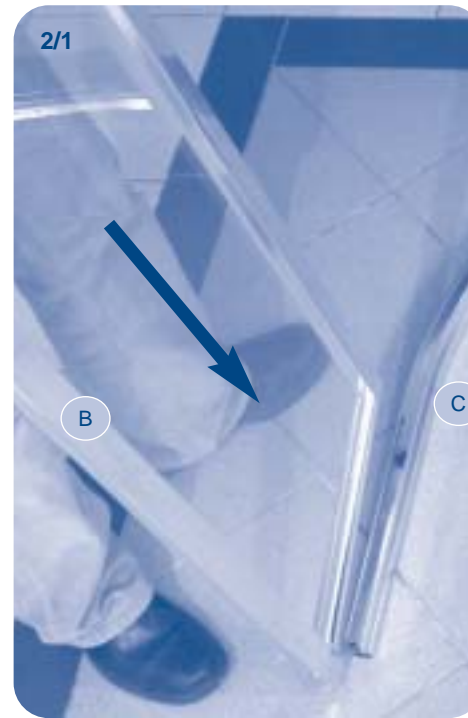


- Snap screw head cover on all screws

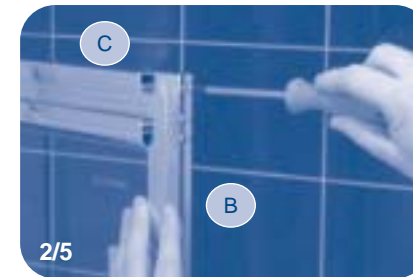
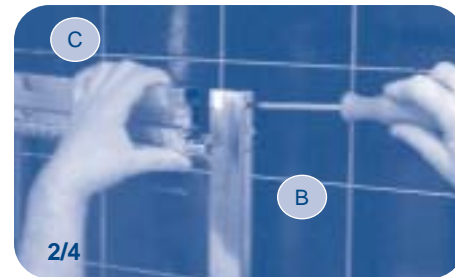


2 Secure Fixed Panels

- Position
- Join
- Secure



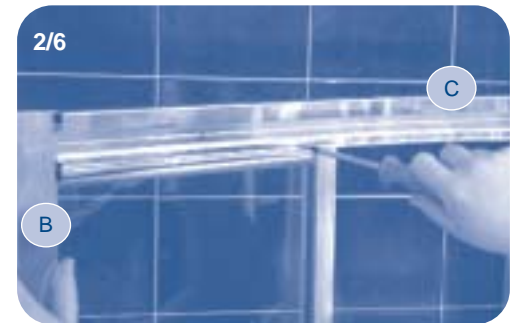
- Guide M4 x 45mm screws through clearance holes in (B) and into predrilled holes in (C).



- Attach the top curved wheel track

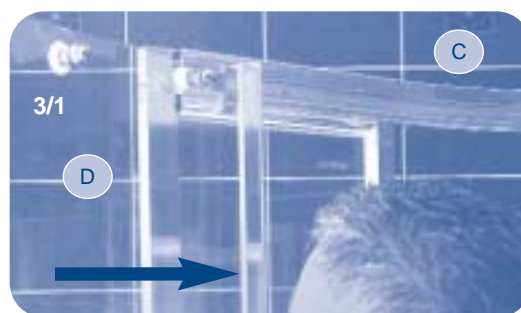
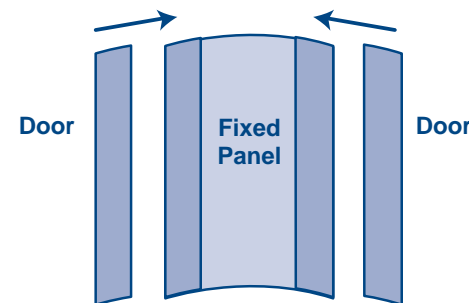


- Place M4x20mm screws top and bottom



3 Secure Door

- Slide doors from both fixed panel ends into wheel tracks (top and bottom) and slide towards centre.



4 Secure Product to Wall

- Carefully slide the product into one wall bracket and then into the other.
- Adjust position of frame to get an even gap between the tray edge and the bottom of the frame.



- Ensure fixed panels are plumb, drill through existing hole in fixed panels (B) into wall brackets (A) top and bottom.



- Secure M4 x 12mm.
- Snap screw head covers on top and bottom.

