

5 Align Doors • Align • Screw by hand



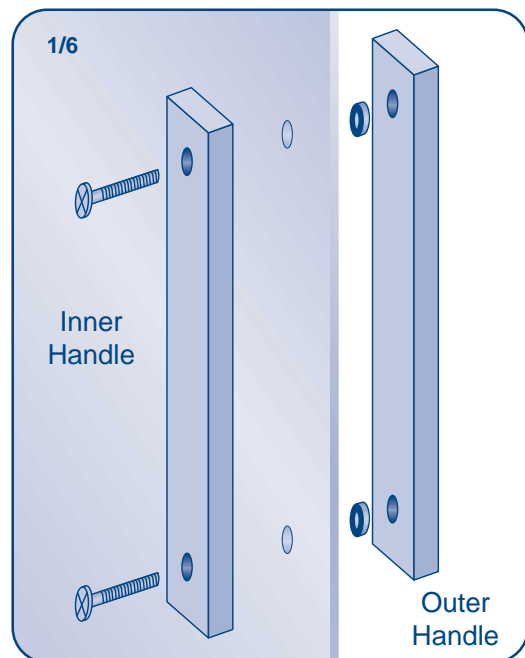
Unlock screw in Wheel Bracket and adjust the wheel by hand to raise or lower the door. After adjustment tighten screw again.

Note: Wheels should be adjusted at top of doors to reduce any door movement vertically.



6 Fix Handles
• Assemble • Screw

Place 30mm Bolts through Inner Handle. Place Spacers onto Bolts and offer through holes in glass. Align outer handle onto Bolts and tighten with Allen Key (supplied).



8 Waterproofing • Silicone Seal

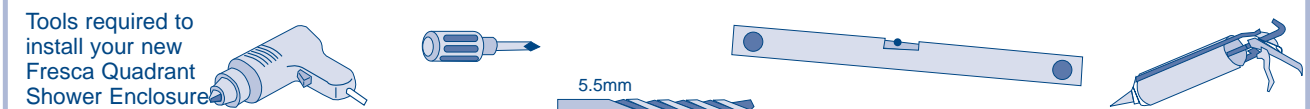
Seal the OUTSIDE edge of the shower with suitable bathroom silicone all around the Shower Tray and the joining between the Wall Brackets (A) and the tiled wall. Allow to set for a minimum of 24 hours before using the shower.

7 Door Stops
Fit top and bottom door stops with 2x35mm screws.



BEFORE YOU INSTALL YOUR QUADRANT SHOWER ENCLOSURE PLEASE READ ALL INSTRUCTIONS. FAILURE TO DO SO MAY LEAD TO INVALIDATION OF YOUR WARRANTY.

- Your enclosure **MUST** always be fixed onto a sturdy tiled wall to ensure a waterproof shower.
- The shower tray **MUST** be fitted level, tiled in and sealed along it's entire wall length.
- The shower should be sealed using silicon sealant, vertically inside and out and horizontally on the outside only. This allows any water trapped inside the frame to escape into the tray.
- **WARNING:** Check walls for electric cabling or water pipes before drilling.



1 Fit Wall Bracket x 2 • Drill • Plug • Screw



1/1 Fit wall brackets (A) 10mm in from the outside of the shower tray ensuring the profile is square. Mark each hole for position.



2/1



3/1 Drill with a 5.5mm masonry drill bit.



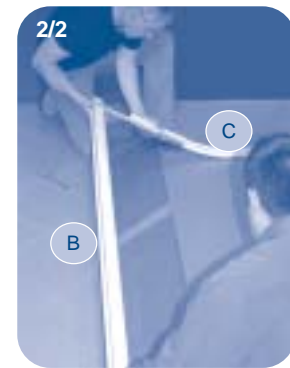
4/1 Insert wall plugs into drilled holes.



5/1 Insert 38mm screw into collar and secure both wall brackets to wall.



6/1 Snap screw head cover on all screws



2/2 Slide other fixed panel in to place



3/2 Secure panels with 8 35mm screws



4/2 Place 4 10mm screws

3 Secure Door



1/3 Carefully slide the frame (B) into one Wall Bracket (A) and then in to the other.



2/3 Adjust position of Frame to get an even gap between the Tray Edge and the bottom of the Frame.



3/3 Ensure fixed panels are square, drill through existing hole in Fixed Panels (B) into fixed Wall Brackets (A) top and bottom.



4/3 Screw provided screws into the new drilled holes at both bottom and top.



1/4

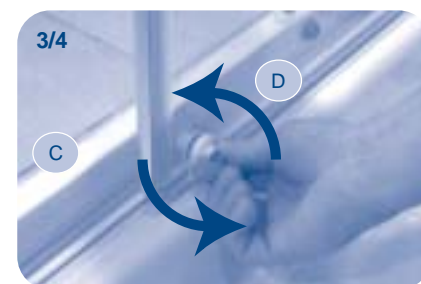
4 Hang Doors

- Position
- Secure



2/4

Hang Sliding Doors (E) onto Fixed Panels (B) by hooking wheels onto track.



3/4

Secure Sliding Door (E) onto Fixed Panels (B) by turning the knob anti-clockwise until you hear a click. The screw can be loosened for ease of turning, retighten afterwards.

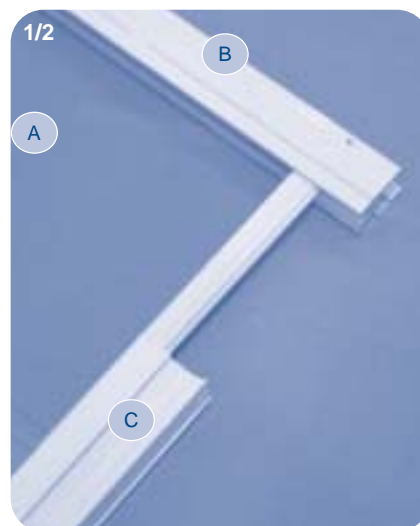


<ul style="list-style-type: none"> x 6 x 6 (38mm) x 4 (12mm) x 10 x 10 x 1 (ø3mm) <p>F009</p>	<ul style="list-style-type: none"> x 8 (35mm) x 4 (10mm) x 2 (35mm) x 2 <p>F020</p>	<ul style="list-style-type: none"> x 4 (30mm) x 4 x 1 <p>F017</p>
---	---	--

2 Secure Fixed Panels

- Position
- Join
- Screw

Slide curved wheel tracks on to one fixed panel ensuring drilled holes on both fixed panel and wheel tracks are facing upwards.
Note: use cardboard on floor to prevent damage to product



1/2

- (A) Wall brackets
- (B) Fixed Panel
- (C) Wheel Tracks
- (D) Sliding doors
- (E) Handles

